



REED SWITCH

JRAG-109C

Deqing Jiahe Electronic Technology Co., Ltd.

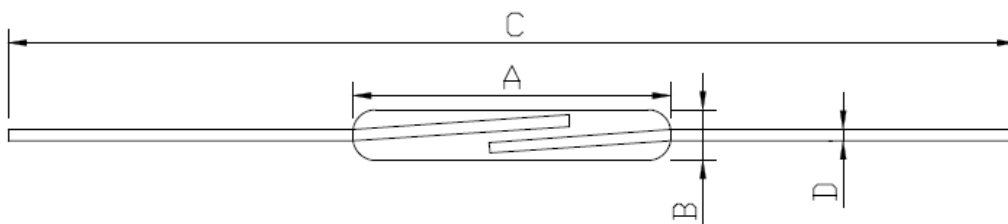
TEL: +86-572-8051676

FAX: +86-572-8051676

sales@jiahe-electronic.com

1. Package Dimension

Unit: mm



2. Features and application

1) Compact and Light

The reed switch can be mounted in a very limited space; it is ideal for use in miniaturized equipment;

2) High Speed Operation

Every movable element has a very low mass resulting in a high speed operation. This enables the reed switch to be used as an interface to a transistor or integrated circuit.

3) Hermetically Sealed

The switching elements of the reed switch are hermetically sealed in an inert gas atmosphere, so that they are never exposed to the external environment;

4) Long Life

The reed switch employs no sliding parts, so that is no fatigue related degradation in the quality of the materials used, ensuring a virtually unlimited mechanical life;

5) Wide application

The reed switch can be used into all kinds of automatical devices, sensor circuits etc.

3. Performance

Electronic Characteristics

Item		Unit	Specification
Contact form		—	1A (Normally open)
Contact material		—	Rhodium
Pull in value		AT	15-20
Min. drop out value		AT	5
Max. contact rating		W	10
Max. switching voltage		VDC	100
Min. breakdown voltage		VDC	220
Max. switching current		A	0.5
Max. carrying current		A	1.0
Max. initial contact resistance		mΩ	200
Min. insulation resistance		Ω	1x10 ⁸
Max. operating time		ms	0.4
Max. release time		ms	0.1
Bounce time		ms	0.1
Resonant frequency		KHz	4.0
Max. operating frequency		Hz	400
Max. contact capacitance		pF	0.3
Electrical life		—	5V-1mA-1x10 ⁸
Dimension	A	mm	14
	B	mm	Ø2.0
	C	mm	50
	D	mm	0.5
Operating temperature		℃	-40~+125